

| | | | | | |
|------|---------------------|-----|-----------------------------|----|-----------------------|
| 1037 | Edifici | 149 | Case | 16 | Religiose |
| 653 | Architetti | 64 | Arabi | 3 | Antiche |
| 6 | Regioni geografiche | 11 | Cultura d'arte | 24 | Moderni |
| 89 | Paesi | 74 | Medio | 4 | Storici/contemporanei |
| | | 7 | Primitivi | | |
| | | 2 | Medievali | | |
| | | 17 | Religiosi/ufficiali | | |
| | | 28 | Classicisti | | |
| | | 8 | Avanguardisti/contemporanei | | |



PHAIDON
 ATLAS
 DELL'
 ARCHITETTURA
 MONDIALE
 DEL
 XXI SECOLO





0604 This holiday home is in Mogno, a very small alpine village in Ticino. It sits at the edge of the village, next to a stream, with panoramic views of the mountains. The architect runs a practice organized around the preservation of traditional buildings in the area and he chose to build this house in stone in accordance with local tradition. This new, modest home was formed in the shell of an existing *rustico* or peasant dwelling.

The project is part of a body of work in which the architect developed an abstract and minimalist approach to vernacular forms. In Mogno, the building is a perfect square, 6 x 6 m (19.7 x 19.7 ft). The stone walls are severe, with simple slit openings cut into them. The building is arranged on three levels, with 35 m² (377 sq ft) on each floor. Each floor plate provides a single open-plan space interrupted by a stair rising into the middle of the room and a bathroom in one corner. The three rooms face in all directions and the facade is broken to frame views of the surrounding mountains. The original house, built with a stone basement, a timber structure and a stone roof, was derelict. The initial concept was to repair the building's roof, but it became clear that inserting a new structure would be necessary. This new

structure was reconstructed from the stone basement and reused timber. An independent steel frame sits on the stone basement and supports the roof, which is covered with granite to match the surrounding houses. The building form is very simple, and rain and snow are discharged directly into the landscape, avoiding the need for gutters. A fireplace provides heating.

- 1 Building in context
- 2 Road side facade
- 3 Detail showing steel structural elements
- 4 Ground-floor plan

Client

Confidential

Area

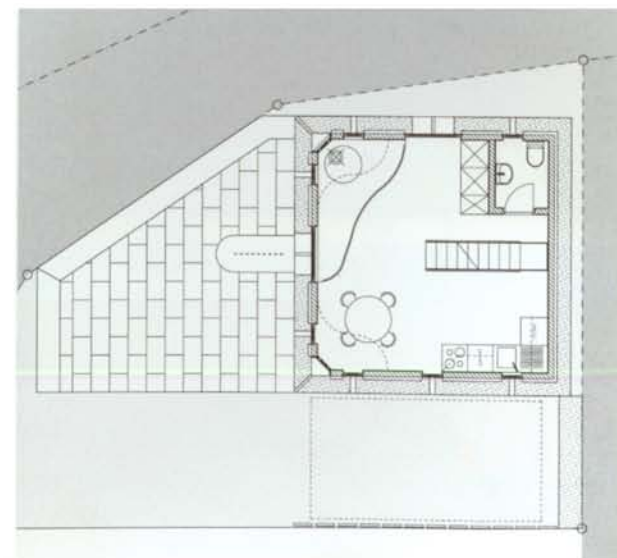
105 m²/1,130 sq ft

Cost

Confidential

Coordinates

Confidential



1

2

4